

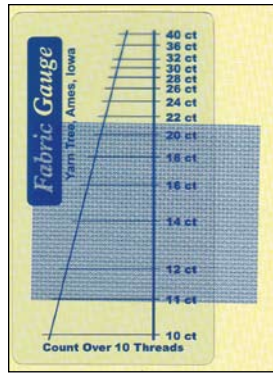


4 in 1 Magnetic Stitch Gauge

This handy gauge will tell you nearly everything you wanted to know before you stitch! Magnetic 6" ruler with stitch gauge marks for 10, 11, 14, 16, 18, 20, 22, 25, 28, 32, 36, and 40 count fabrics. Hold the gauge to your fabric and match the lines to find the fabric count. Great for stores, too, when you have that mystery fabric on the shelf. Also gives suggested tapestry needle size and strands of floss to use for each fabric listed. From Yarn Tree.

4440 4 in 1 Magnetic Stitch Gauge

\$3.50



Fabric Gauge

Quickly find the thread count of any fabric up to 40ct by using this gauge and counting over 10 threads. Durable clear vinyl. Business card size—easy to carry with you for quick reference. From Yarn Tree.

3679 Fabric Gauge

\$2.50



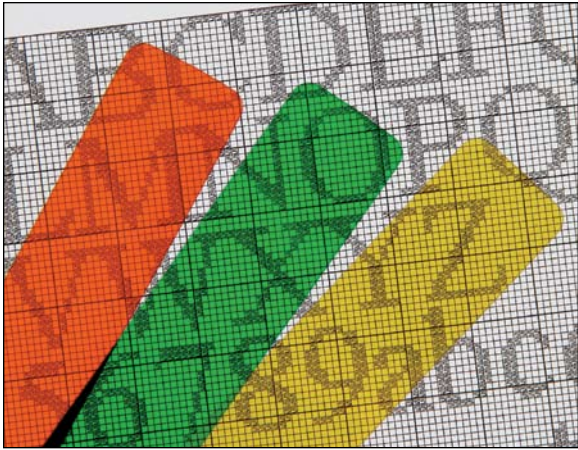
Cross Stitch Gauge

At last! This new and improved Cross Stitch Gauge has gauges for all your stitch counts: 11, 14, 16, 18, 22, 25, 26, 28, 30, 32, 36, and 40. Three openings across this 3"x10" tool make it easy to count your fabric. Also has rulers for inches, as well

as centimeters, so if you know you have 50 stitches, you can tell how many inches that will be when stitched on different counts of fabric just by looking at your gauge. Made of durable white plastic and printed with blue. From Yarn Tree.

2492 Cross Stitch Gauge

\$4.00



Static High Lighters

Static electricity holds these 1"x6" high lighters in place! Each pack contains 3 static high

lighters. From Yarn Tree.

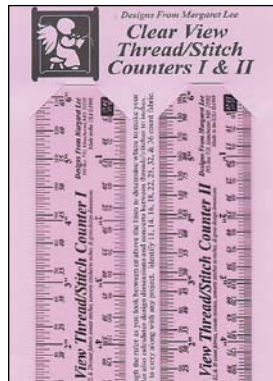
2710 Green

2712 Orange

2717 Yellow

2740 Assorted (1 of each color)

\$2.50



Clear View Thread/Stitch Counters I & II

Easily count threads and stitches with this handy set of two transparent rulers. Simply view your needlework through the ruler, look between the lines or above them to determine where to make the next stitch. Also checks or helps determine the count of a fabric (identifies 11, 14, 16, 18, 22, 28, 32, & 36 count fabrics); hold it up to a frame or fabric to see what stitch size will fit into the opening; and convert design dimensions. Size 1 1/2"x6 1/4" so it is convenient to carry along for any project. By Designs from Margaret Lee.

8207 Clear View Thread/Stitch Counters I and II 7.00

7209 Clear View Thread/Stitch Counters I and II with carrying case 9.00



High Lighter Yellow Guides

Tired of losing your place?

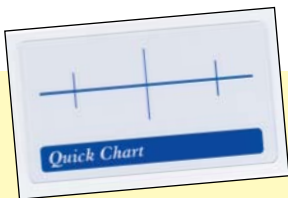
These simple 6"x1" High Lighters will help you keep track of your spot on charts and any written text. Yellow color helps guide your eyes, while transparent color lets you see what's coming next. When you're stitching a row, you can see that single symbol floating alone in the line below so you can stitch it while you are nearby instead of carrying threads across your work. Three styles of High Lighter are available. High Lighter Yellow Guide is a die-cut yellow strip.

Magnetic High Lighter 1 has a strip magnet across the bottom for a double guide feature. This guide has a firm grip to your metal board so you will not lose your place. Top magnet will hold your pre-threaded needles out of your way. Magnetic High Lighter 2 has two small magnets on each end so you can use it on a metal board but still see through the width of the guide. This guide will slide easily while maintaining grip. Use the top magnets to hold your needles out of your way.

7730 High Lighter Yellow 1.50

7744 Magnetic High Lighter 1 2.50

7751 Magnetic High Lighter 2 2.00

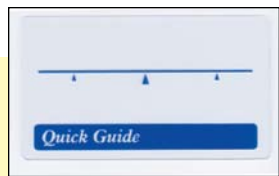


Quick Chart

Easily find your place even on color charts! Bold lines are easy to see. Horizontal line will mark your row. Vertical lines are spaced 1" apart making it easy to keep your place and count stitches on your graph. Static helps hold it to your page. Small Quick Chart is business card size. Long Quick Chart is 7" long, 2" wide. From Yarn Tree.

7798 Quick Chart-Small \$2.50

7807 Quick Chart-Long \$2.76



Quick Guide

Keep your place on pattern text, as in knitting or crochet, cookbooks or reading any small print. Bold triangles are 1" apart. Static helps hold it to your page. Short Quick Guide is business card size. Long Quick Guide is 2" wide by 7" long. From Yarn Tree.

7816 Quick Guide-Short \$2.50

7823 Quick Guide-Long \$2.76



Complete Cross Stitch Gauge

With the Complete Cross Stitch Gauge from Cottage Mills you can tell where to start stitching, count stitches, and find the stitched size of a design. Scales for 11, 14, 18, 19, 20, 22, 25, 26, 28, 30, 32, and 36 count fabric. Includes a floss color comparison chart for DMC, Coats, and Anchor floss.

8203 Cross Stitch Gauge

5.94