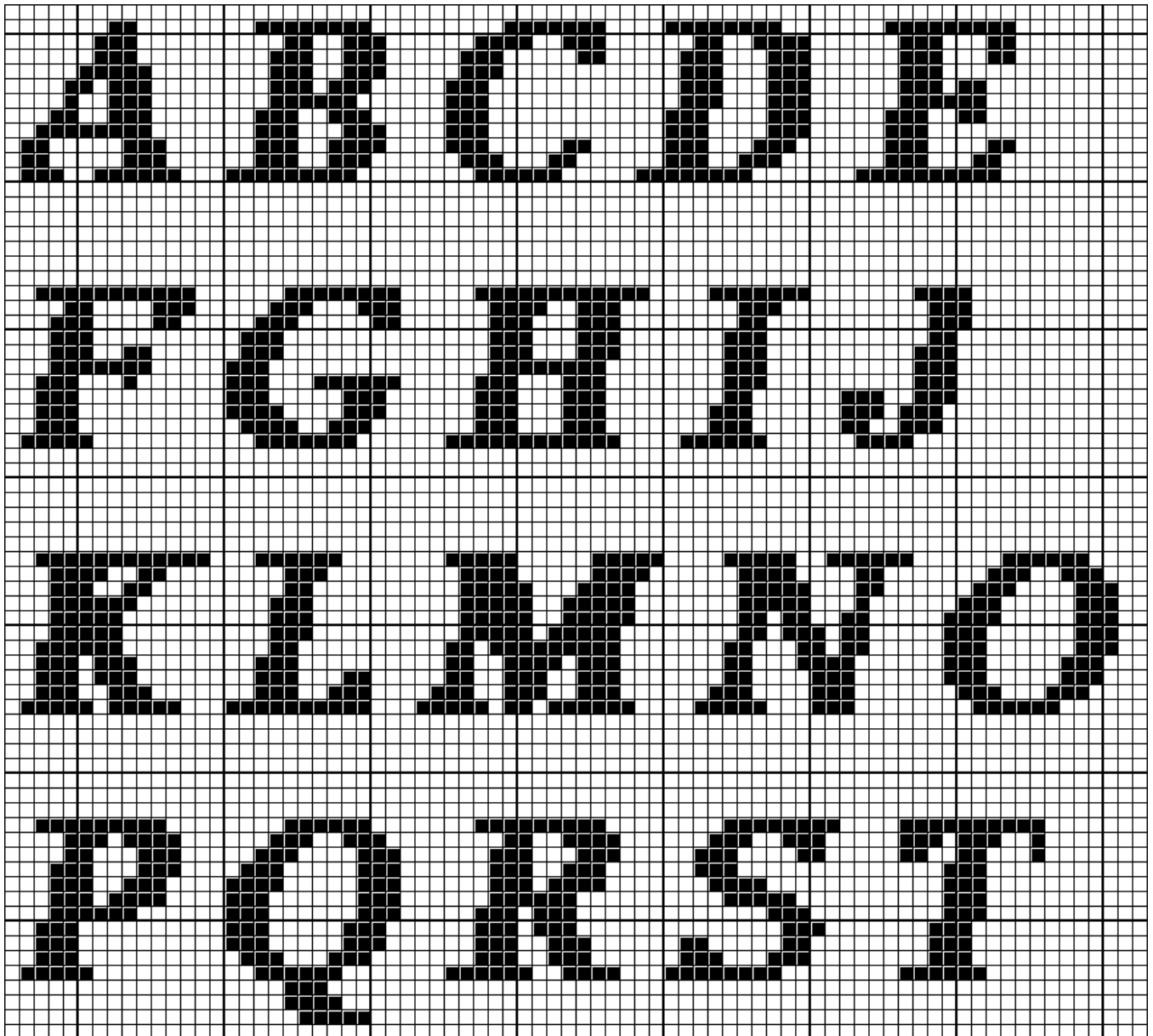
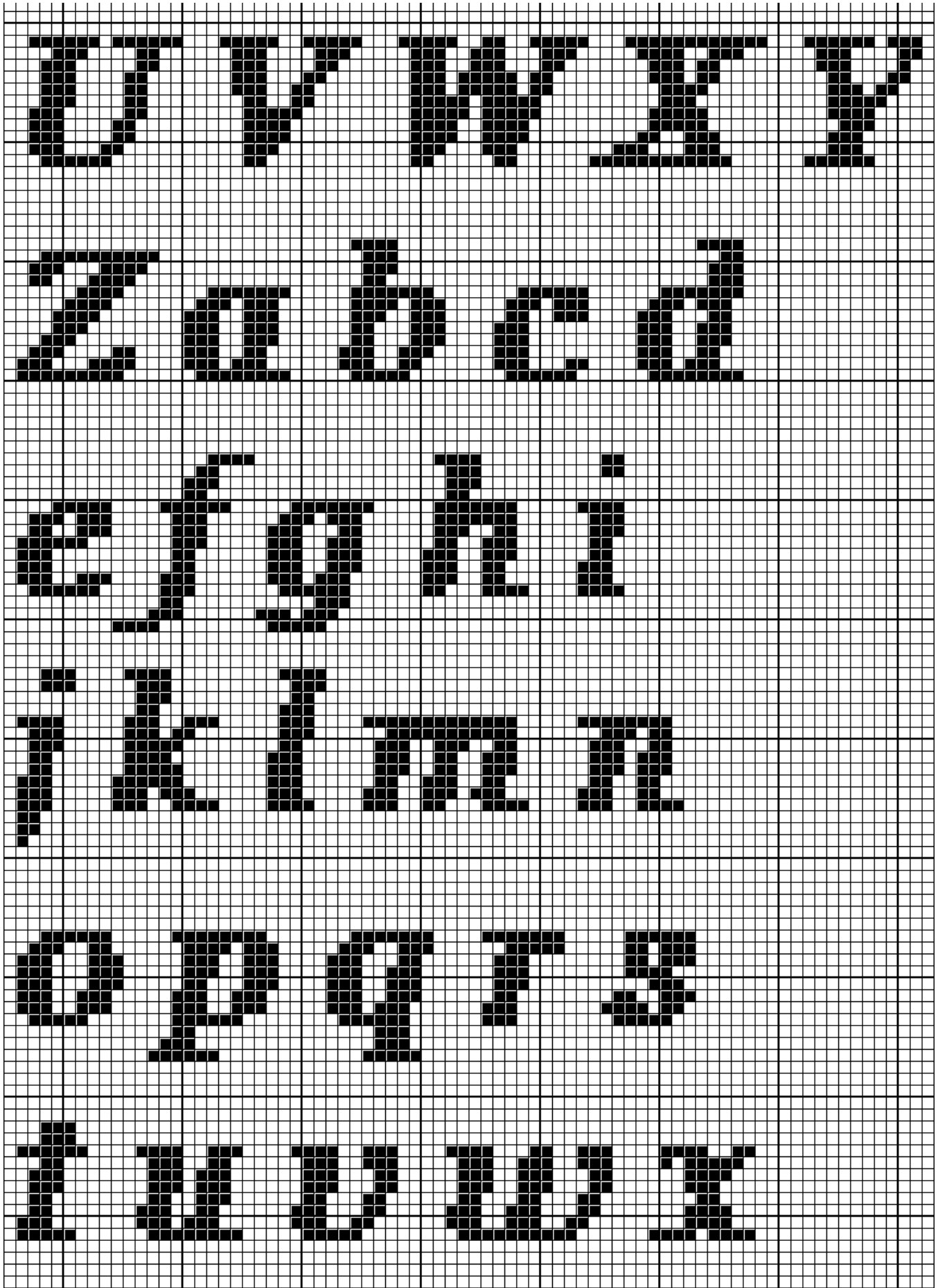


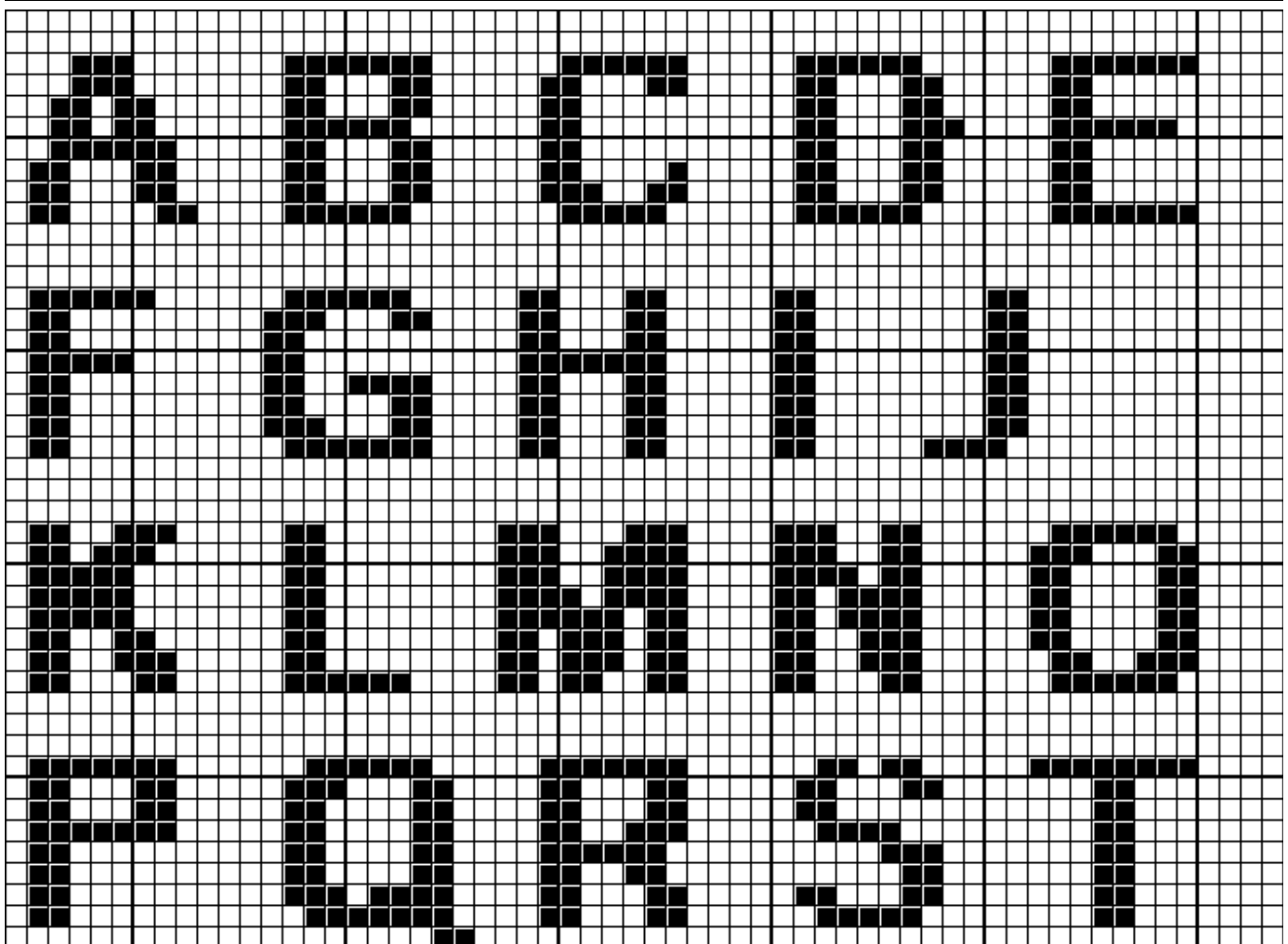
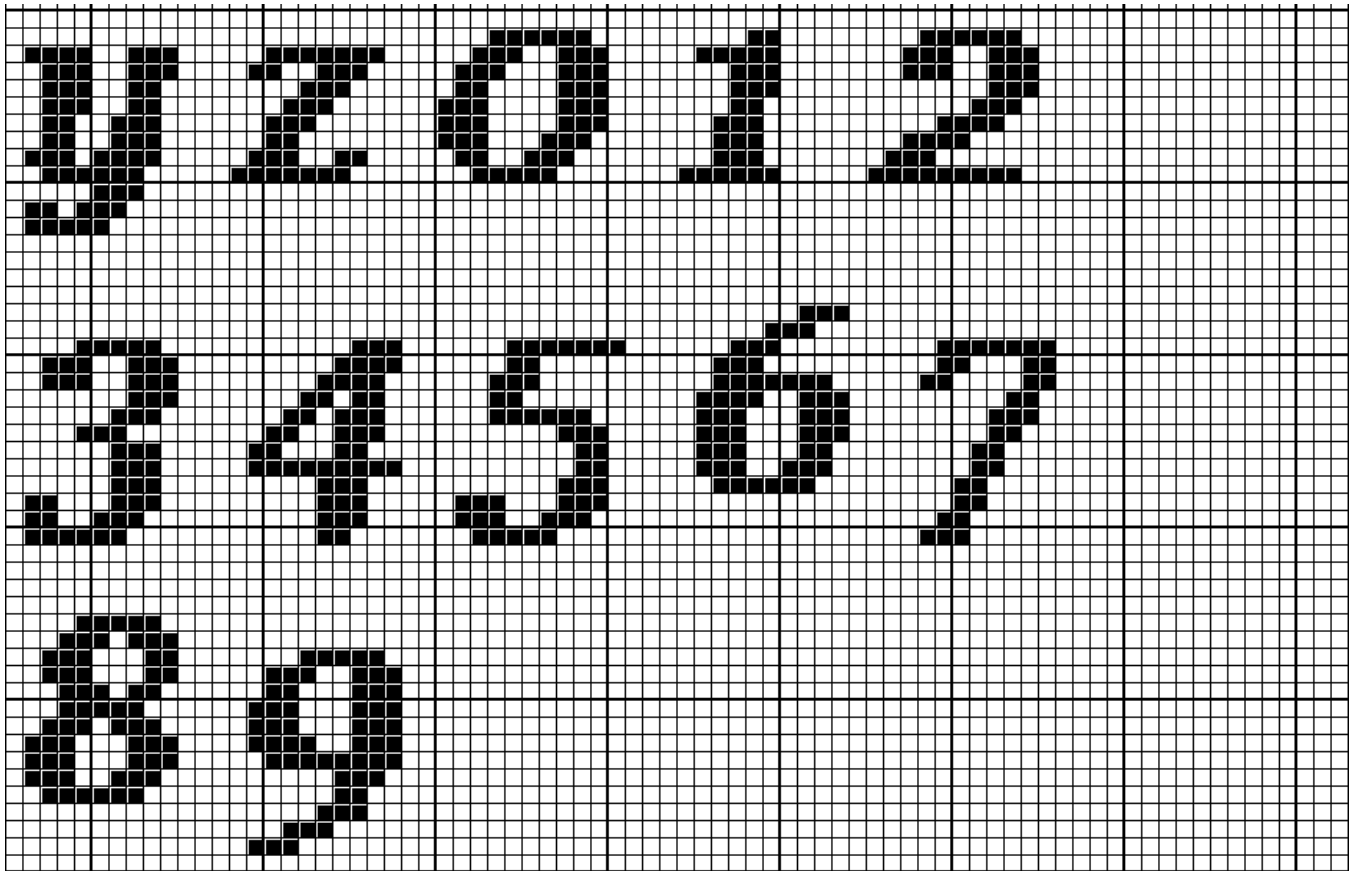
A B C D E F G H I J K L M
N O P Q R S T U V W X Y Z
a b c d e f g h i j k l m
n o p q r s t u v w x y z
1 2 3 4 5 6 7 8 9 0

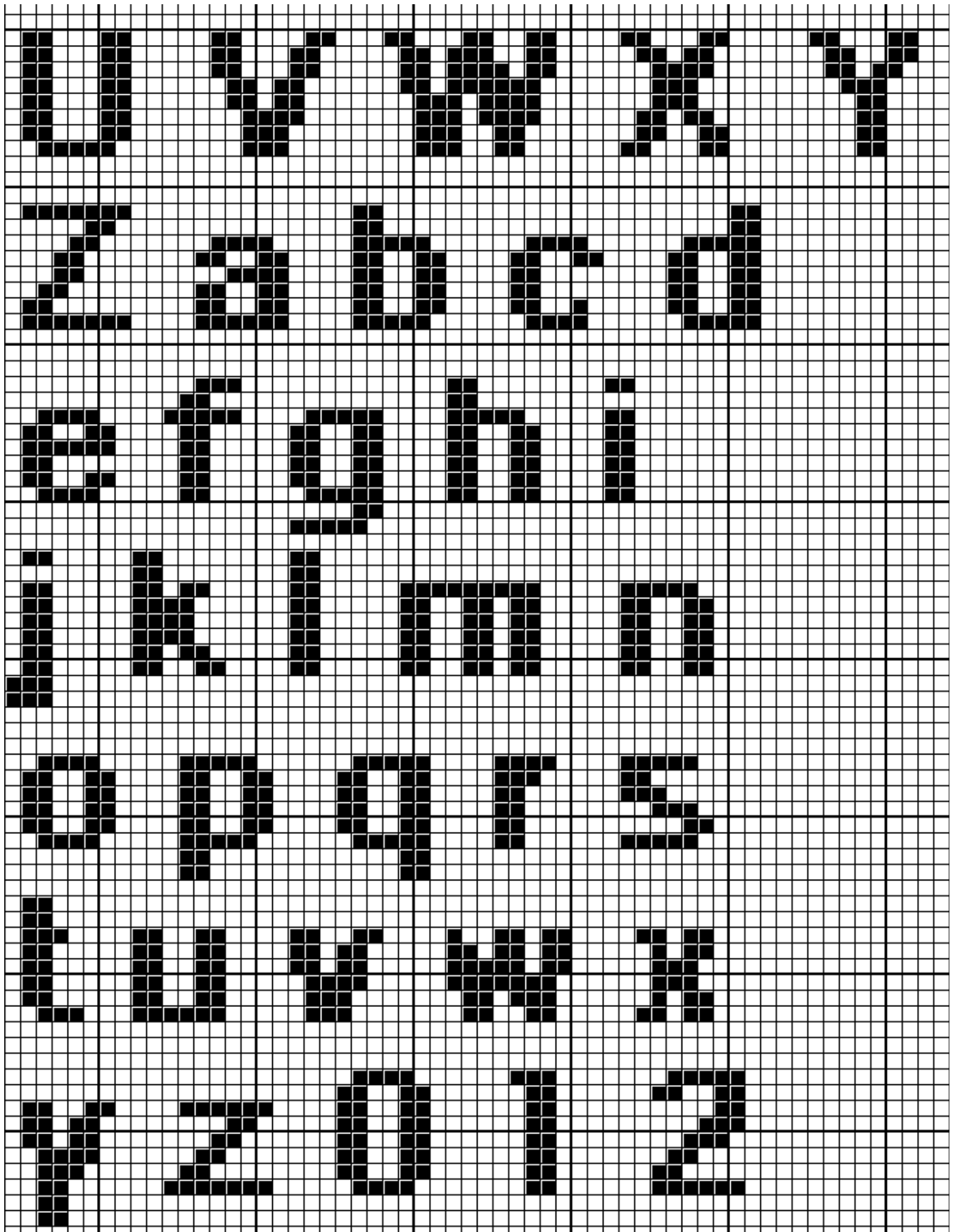
Yarn Tree

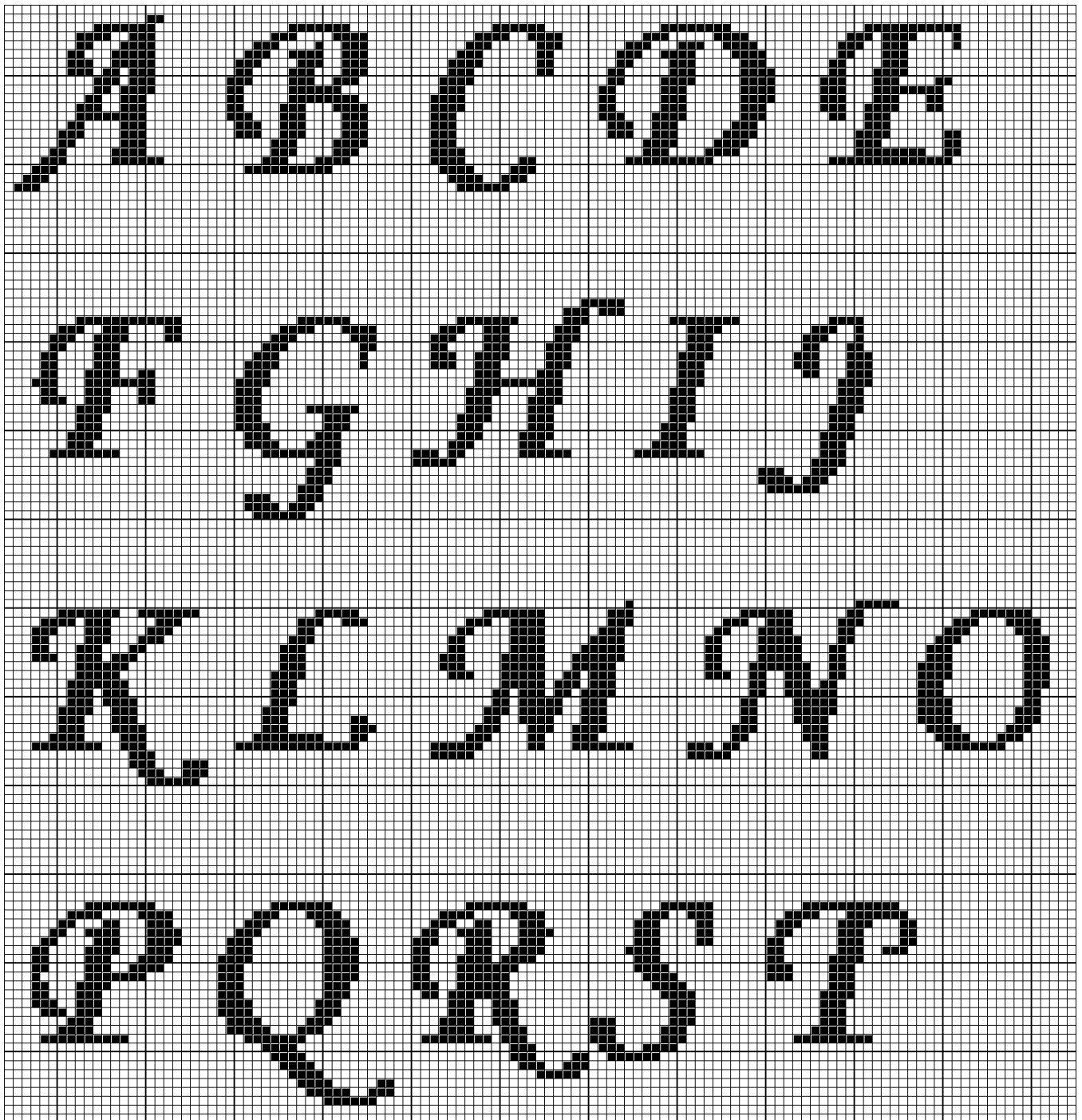
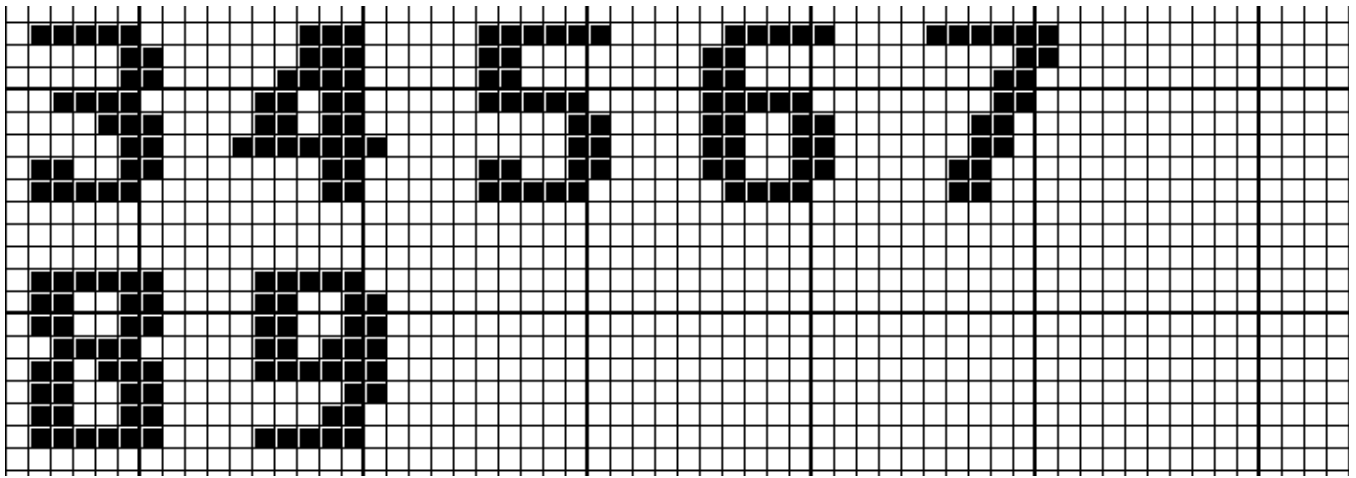
Your Best Source For Cross Stitch
For Over 30 Years

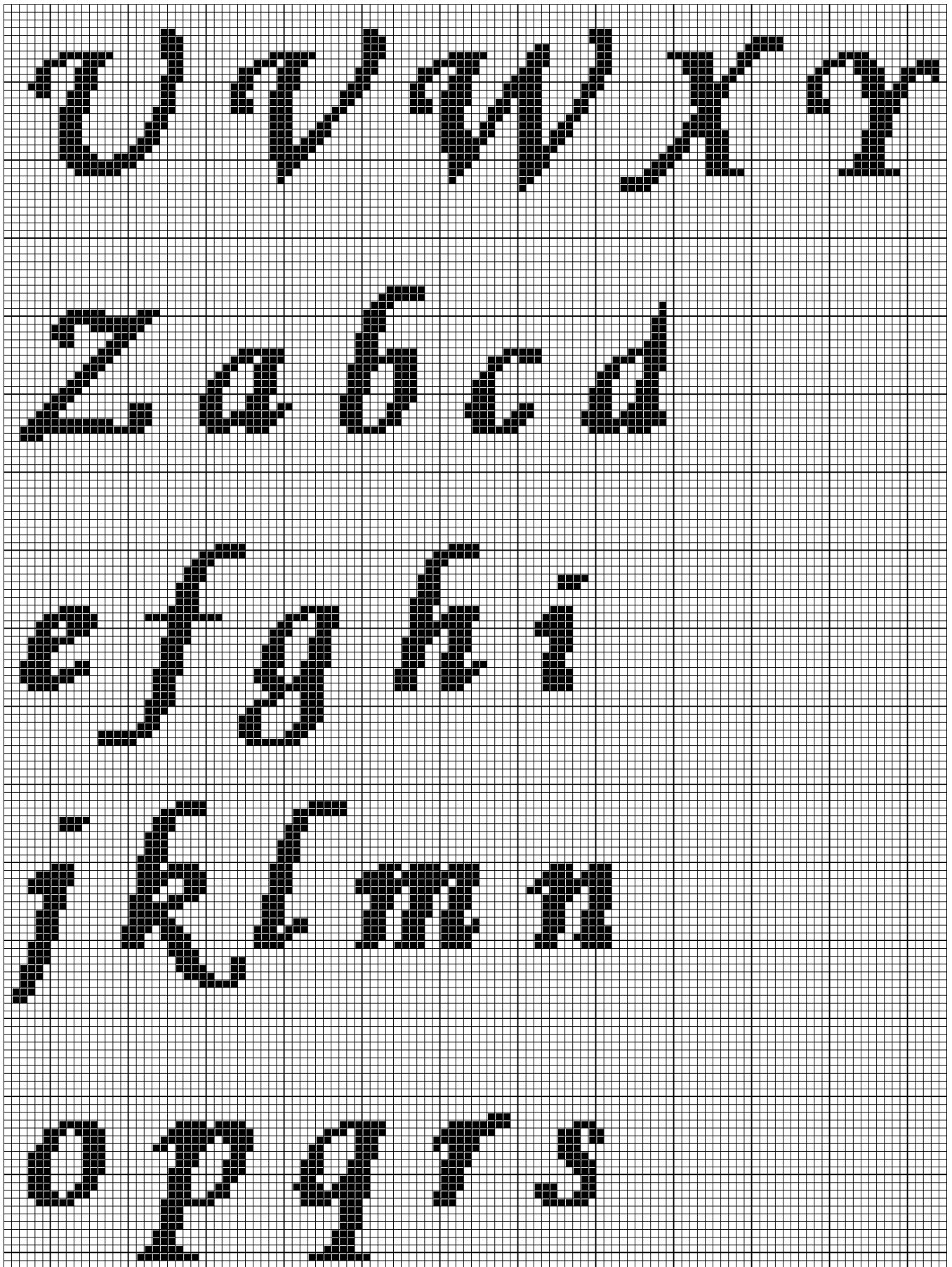


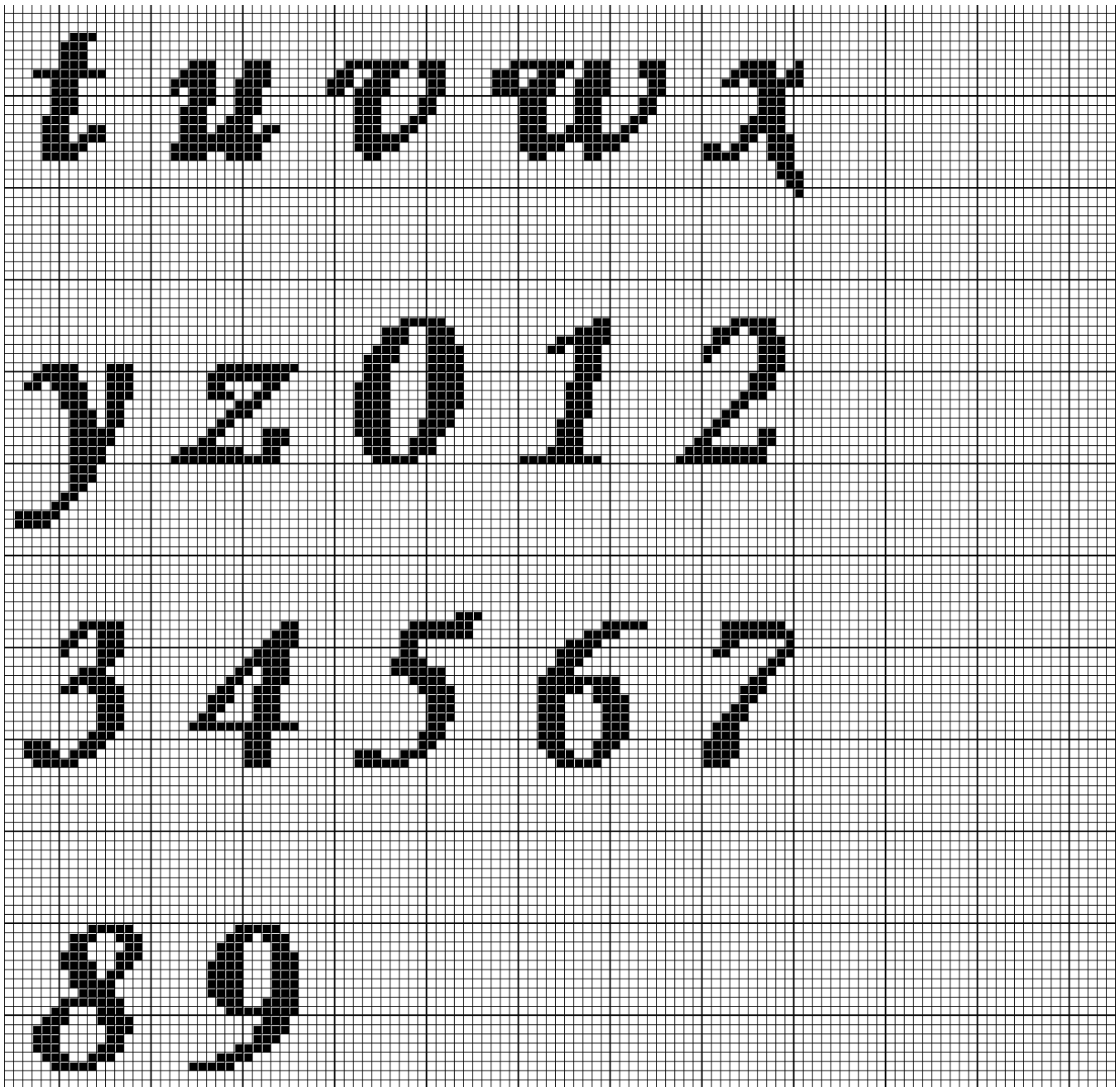


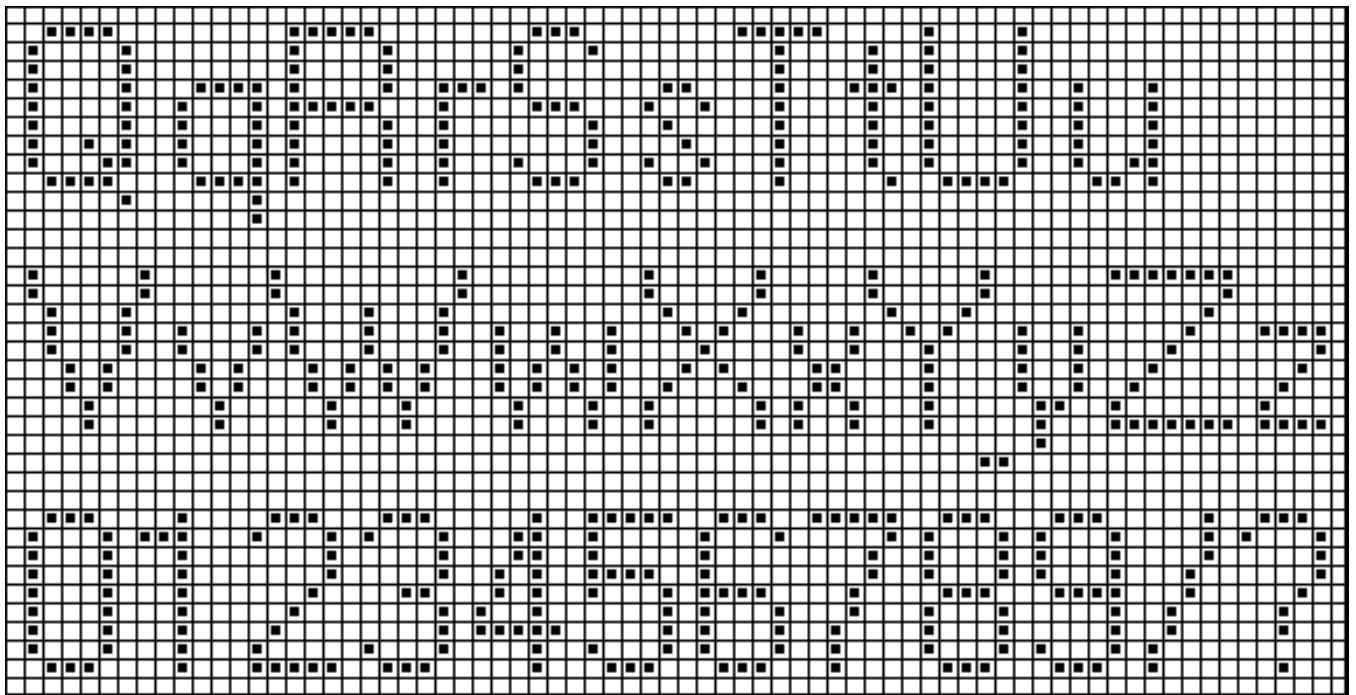
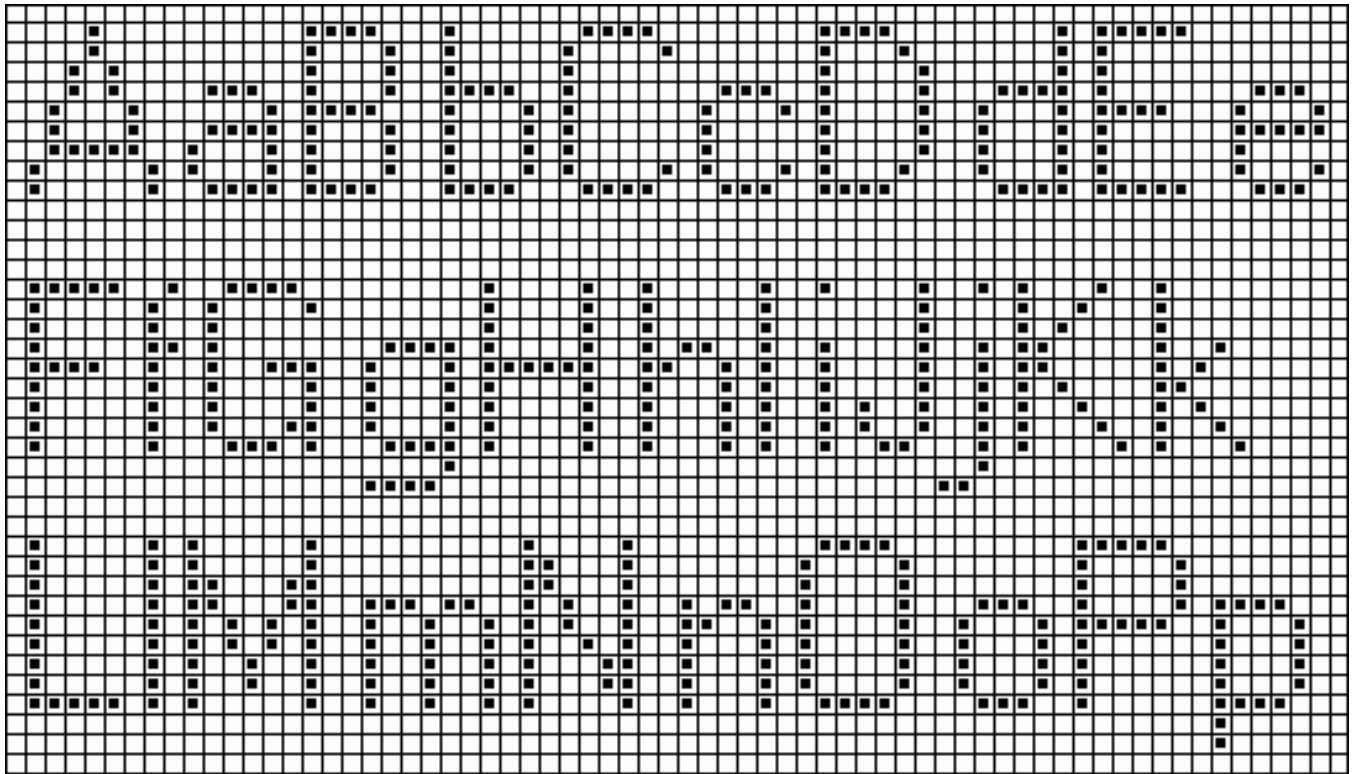


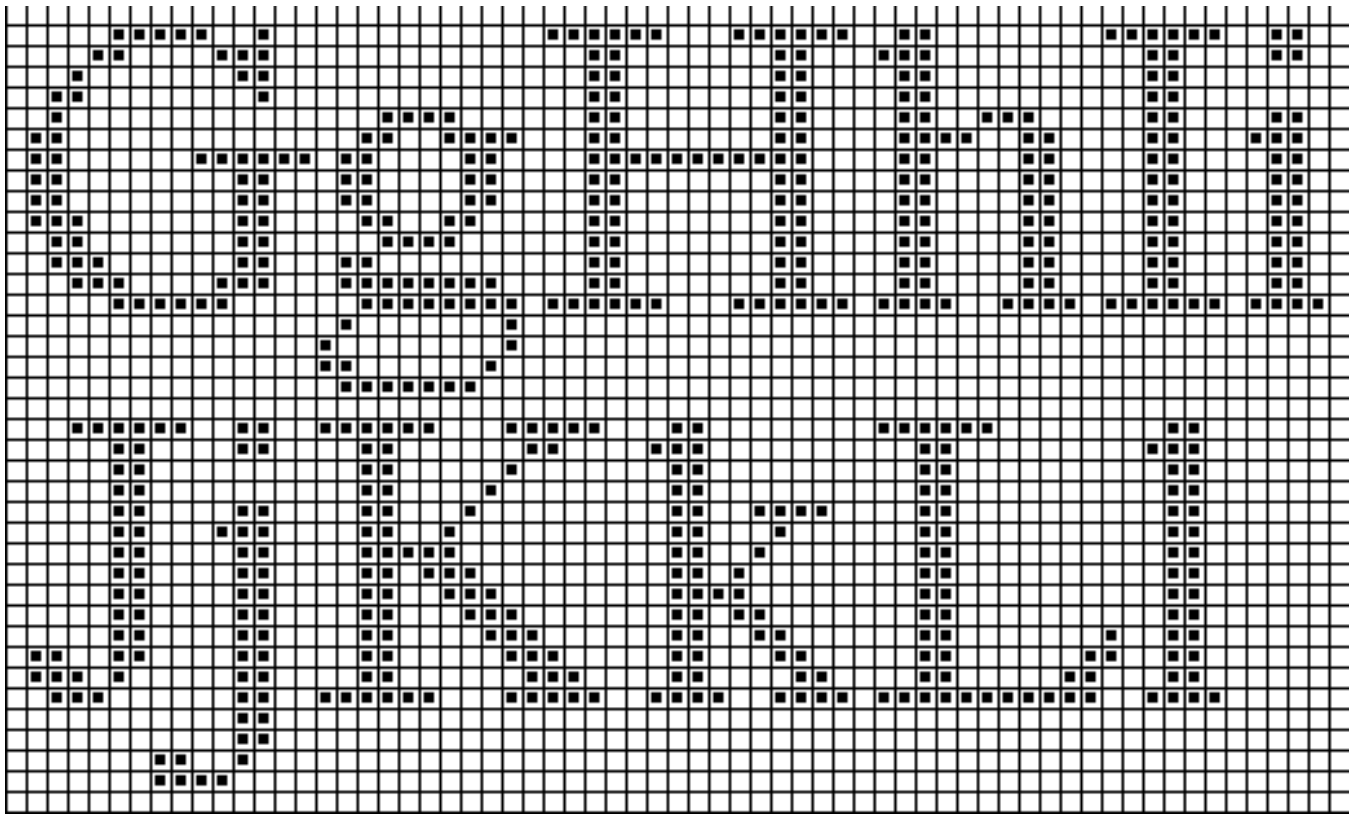
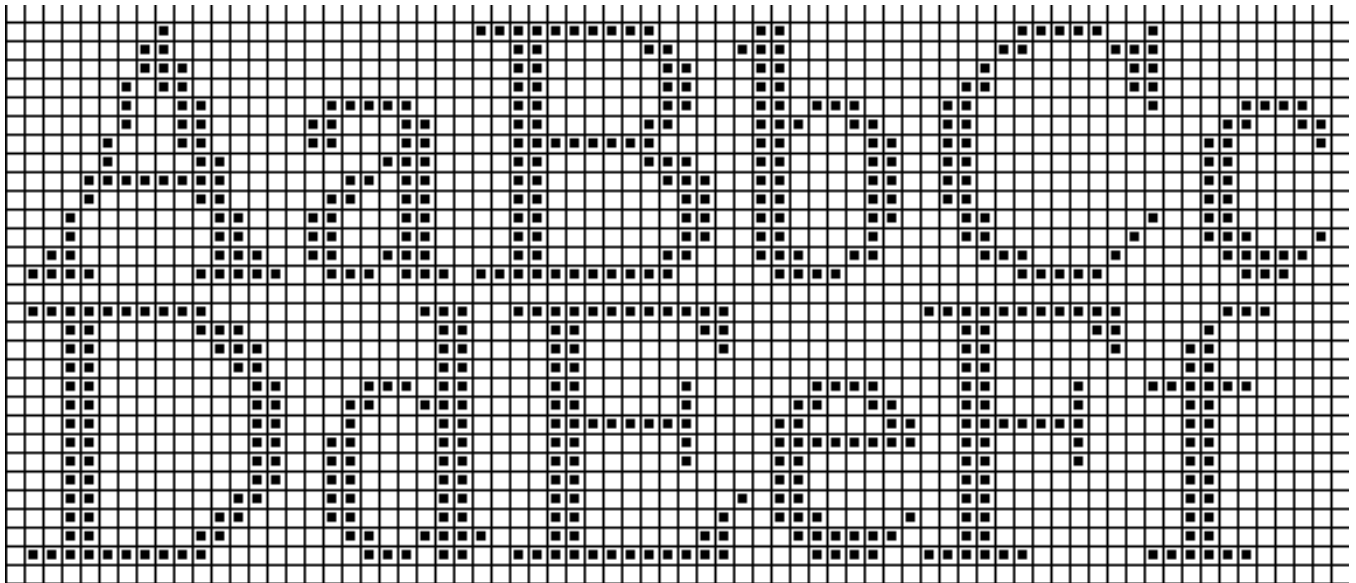


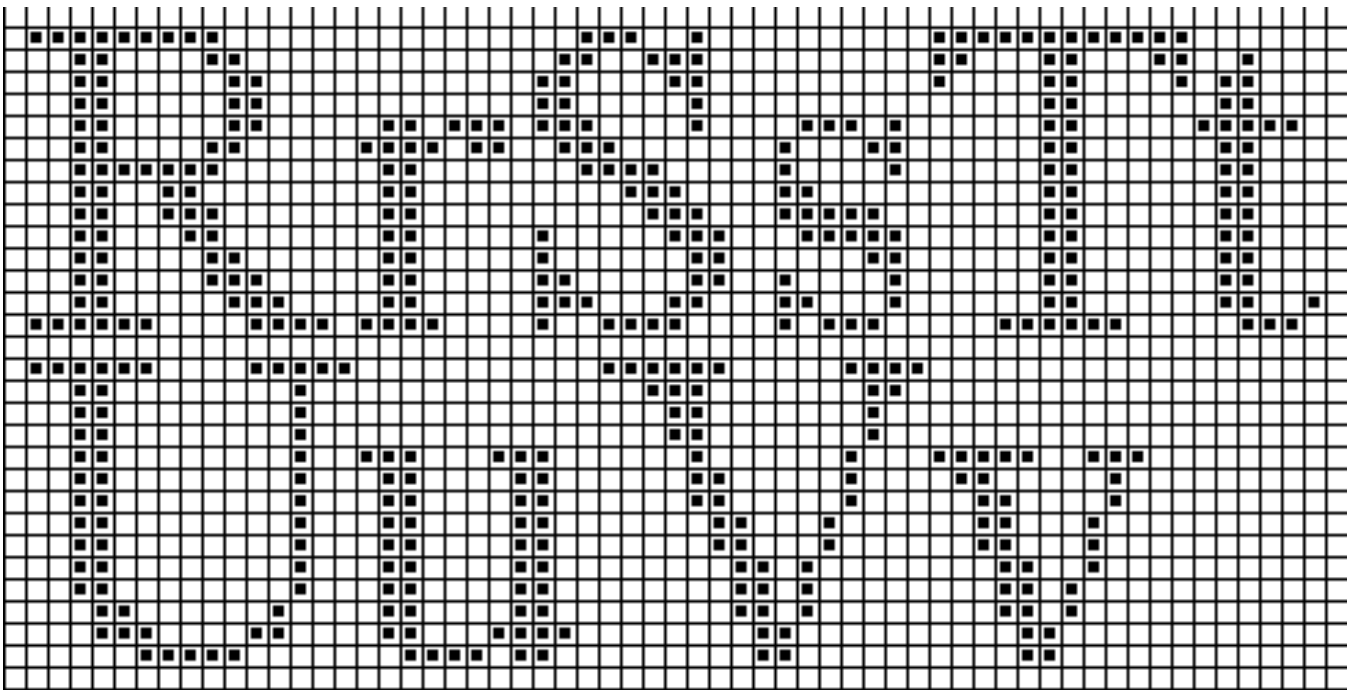
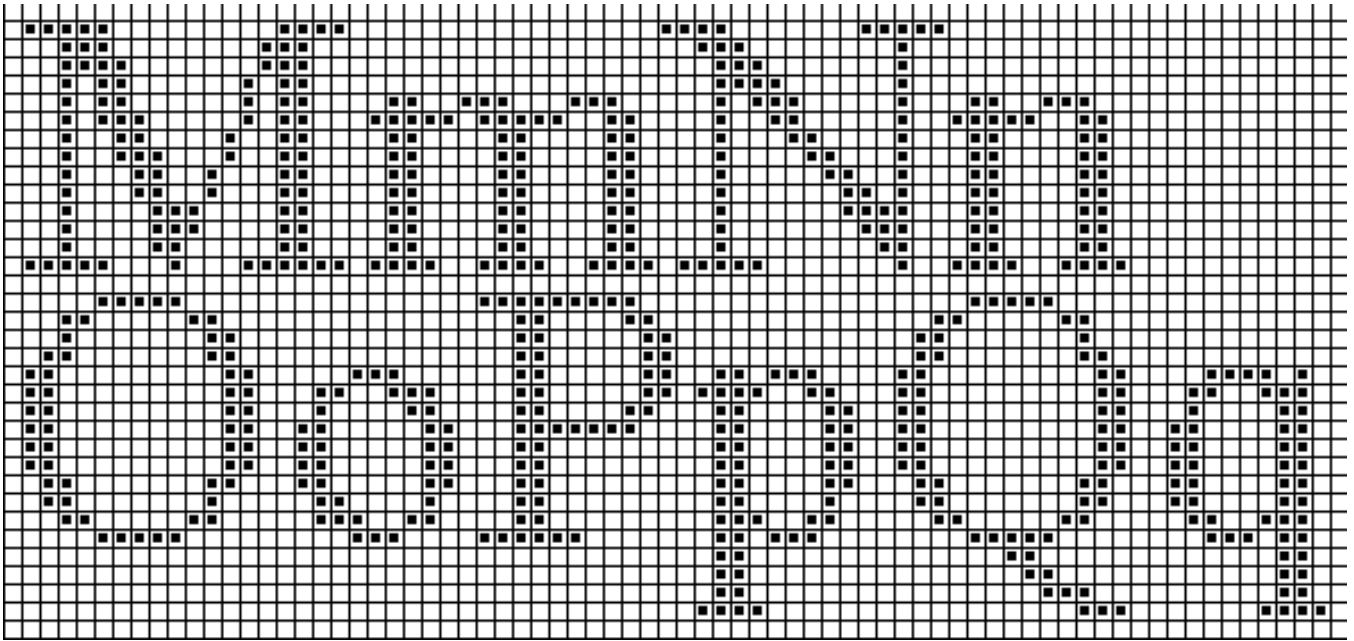


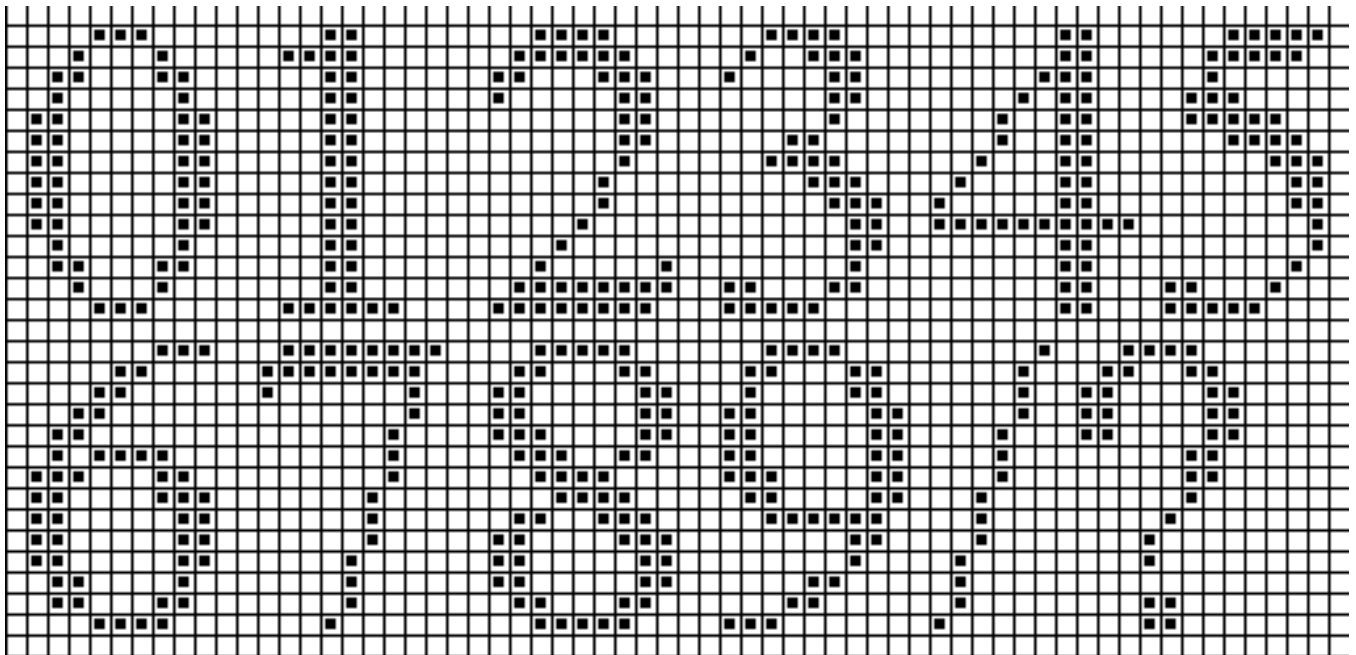
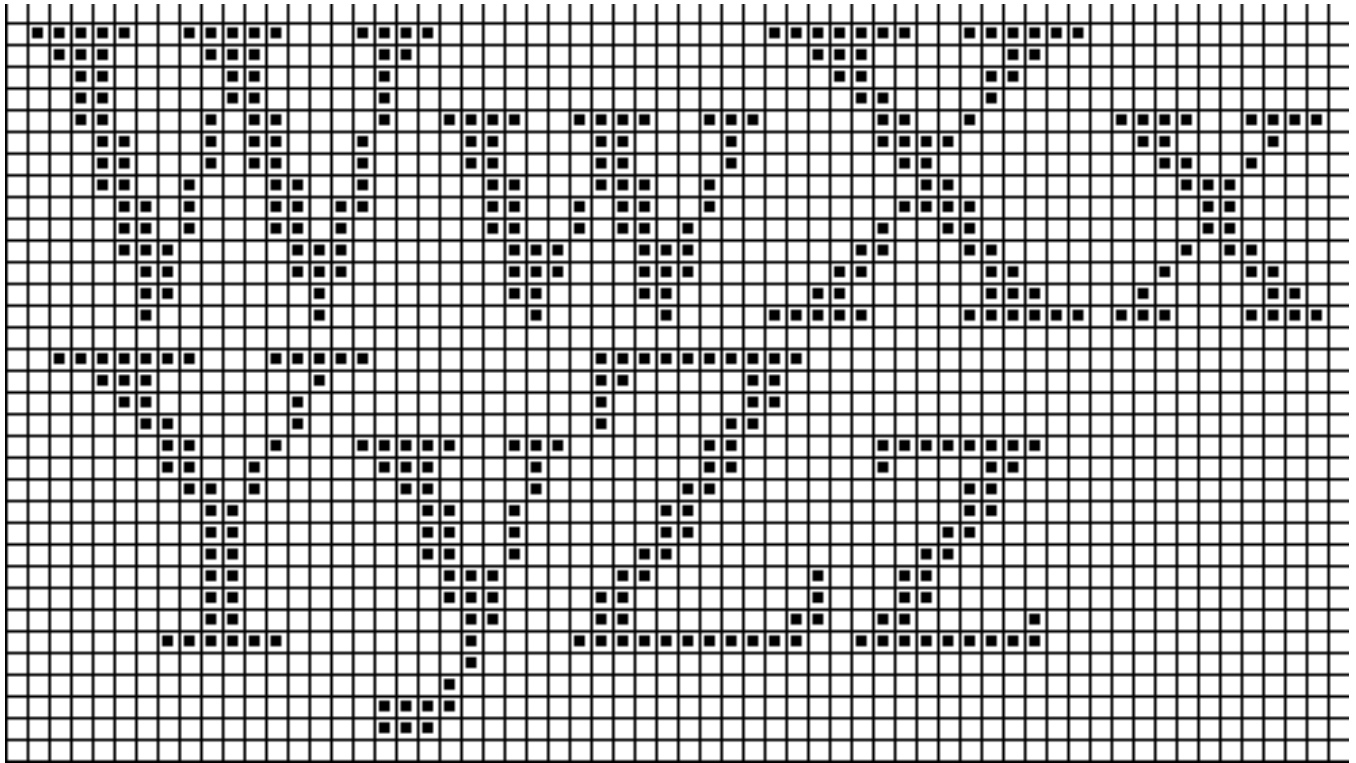












Yarn Tree



Your Best Source For Cross Stitch For Over 30 Years

We encourage you to use anything from our web site to promote cross stitch and needlework. No additional permission is required. Where appropriate, please include our business name and/or web page somewhere. Just a small “from Yarn Tree, Ames, Iowa” or “from yarntree.com” is fine.

Reproduction for free distribution is allowed. yarntree.com